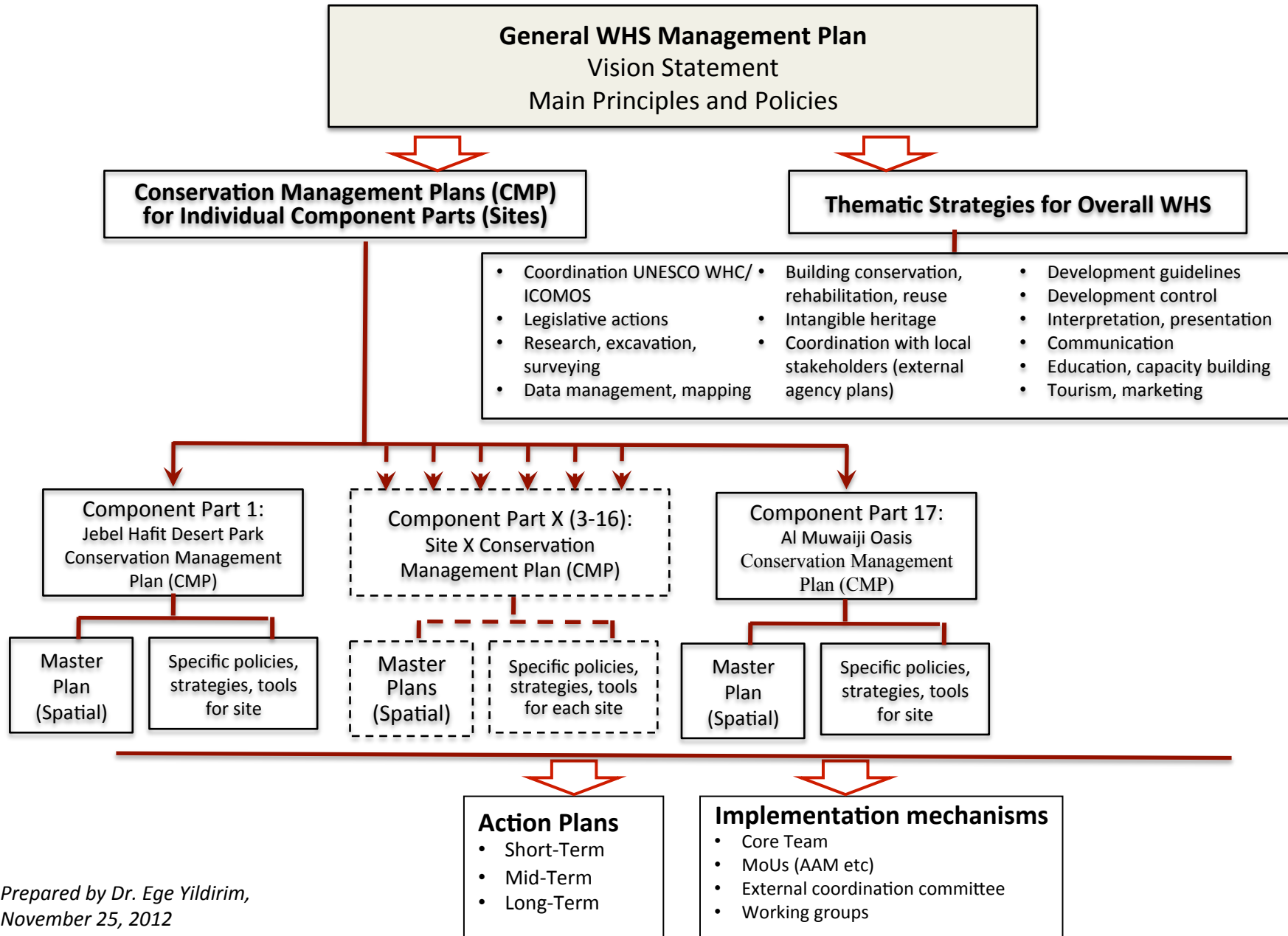


The Cultural Sites of Al Ain World Heritage Site (Serial Property) Management Plan Proposed Conceptual Framework



Existing Reference Documents for Al Ain WHS Management Plan

- **UNESCO Guidance Documents**
 - Operational Guidelines
 - Publication on Serial Properties
 - Publication on Buffer Zones
 - Etc.
- **Abu Dhabi Cultural Heritage Management Strategy**
- **Management Plans prepared for/ by ADACH**
 - Documents submitted by consultants: Hili Archaeological Park, Mezyad Desert Park
 - Drafts in progress by ADACH Staff: Rumailah, Sultan Fort, Al Ain Oasis
- **Master Plans prepared for ADACH by consultants**
 - Al Ain Oasis Cultural Quarter, Hili Archaeological Park, Mezyad Desert Park, Qattara- Jimi Oases (draft)
- **External agency master plans**
 - UPC Plan Al Ain 2030
 - UPC Plan Wasat Madinat 2030
 - DoT Al Ain Surface Transport MP
- **Development Guidelines and Regulations**
 - Issued by TCA: Interim Oasis Buffer Zone Development Guidelines (until new edition is issued), Al Ain Oasis P1 Public Realm Guidelines, Falaj Intervention Guidelines
 - To be issued by TCA: Al Ain WHS & BZ Dev. Guidelines
 - Issued by UPC: Urban Design Street Manual, Public Realm Guidelines, etc. (see transmission from UPC)
 - Drafts in progress by UPC: AD Code, Al Ain Architectural Guidelines, etc.
 - AAM Permitting procedures

(Also see document 'Status of Master Plans and Management Plans for 'The Cultural Sites of Al Ain' World Heritage Site Component Parts' dated Nov. 21, 2012)

